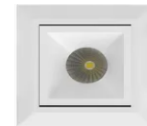




	code	w	lm	led	size (mm)	cut-out(mm)
Architectural Lighting	L06058-2	2	100lm	1	L45xW45xH50mm	37x37mm

High-Contrast

Frame Versions



Color temperature	Finishes	Protection	Optic
2700K CRI >90	Black	IP20	Spot (15°)
3000K CRI >90	White		Flood (30°)
4000K CRI >90			Wide Flood (45°)
5000K CRI >90			Wall Washer



Technical description

Linear miniaturised recessed luminaire for 1 optical elements with LED lamps - fixed optic - three beam angle for option. Despite the ultracompact size of the product. The technology of the optic system guarantees an efficient flow and a high level of controlled glare visual comfort. Version with perimeter surface frame. Metallised, thermoplastic, high definition Opti Beam reflectors, integrated in a set-back position in the anti-glare screen. Osram branded LED - High CRI.

Certification : Europe Standard CE certificate

Material : Die-cast aluminum and thermoplastic

Installation : Wall recessed or ceiling recessed with steel wire springs for false ceilings from 1 to 20 mm thick

Application : Hotel, Airport, Art Centre, Museum, Art Gallery, Restaurant, Home, Office, Shopping mall or other Commercial and Retail Spaces.

Total Power : 2W 100lm

Dimensions: L45xW45xH50mm

Cut out: 37x37mm

Power Supply: 200mA 3 Vdc

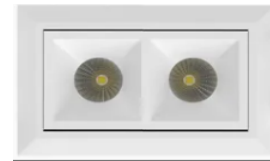


Architectural Lighting
High-Contrast
Frame Versions

code	w	lm	led	size (mm)	cut-out(mm)
L06058-4	4	200lm	2	L75xW45xH50mm	67x37mm



cut out  67*37mm



Color temperature		Finishes	Protection	Optic
2700K	CRI >90	Black	IP20	Spot (15°)
3000K	CRI >90	White		Flood (30°)
4000K	CRI >90			Wide Flood (45°)
5000K	CRI >90			Wall Washer



Technical description

Linear miniaturised recessed luminaire for 2 optical elements with LED lamps - fixed optic - three beam angle for option. Despite the ultracompact size of the product. The technology of the optic system guarantees an efficient flow and a high level of controlled glare visual comfort. Version with perimeter surface frame. Metallised, thermoplastic, high definition Opti Beam reflectors, integrated in a set-back position in the anti-glare screen. Osram branded LED - High CRI.

Certification : Europe Standard CE certificate

Material : Die-cast aluminum and thermoplastic

Installation : Wall recessed or ceiling recessed with steel wire springs for false ceilings from 1 to 20 mm thick

Application : Hotel, Airport, Art Centre, Museum, Art Gallery, Restaurant, Home, Office, Shopping mall or other Commercial and Retail Spaces.

Total Power : 4W 200lm

Dimensions: L75xW45xH50mm

Cut out: 67x37mm

Power Supply: 400mA 6Vdc



	code	w	lm	led	size (mm)	cut-out(mm)
Architectural Lighting	L06058-10	9.5	550lm	5	L147xW45xH50mm	139x37mm

High-Contrast

Frame Versions



Color temperature		Finishes	Protection	Optic
2700K	CRI >90	Black	IP20	Spot (15°)
3000K	CRI >90	White		Flood (30°)
4000K	CRI >90			Wide Flood (45°)
5000K	CRI >90			Wall Washer



Technical description

Linear miniaturised recessed luminaire for 5 optical elements with LED lamps - fixed optic - three beam angle for option. Despite the ultracompact size of the product. The technology of the optic system guarantees an efficient flow and a high level of controlled glare visual comfort. Version with perimeter surface frame. Metallised, thermoplastic, high definition Opti Beam reflectors, integrated in a set-back position in the anti-glare screen. Osram branded LED - High CRI.

Certification : Europe Standard CE certificate

Material : Die-cast aluminum and thermoplastic

Installation : Wall recessed or ceiling recessed with steel wire springs for false ceilings from 1 to 20 mm thick

Application : Hotel, Airport, Art Centre, Museum, Art Gallery, Restaurant, Home, Office, Shopping mall or other Commercial and Retail Spaces.

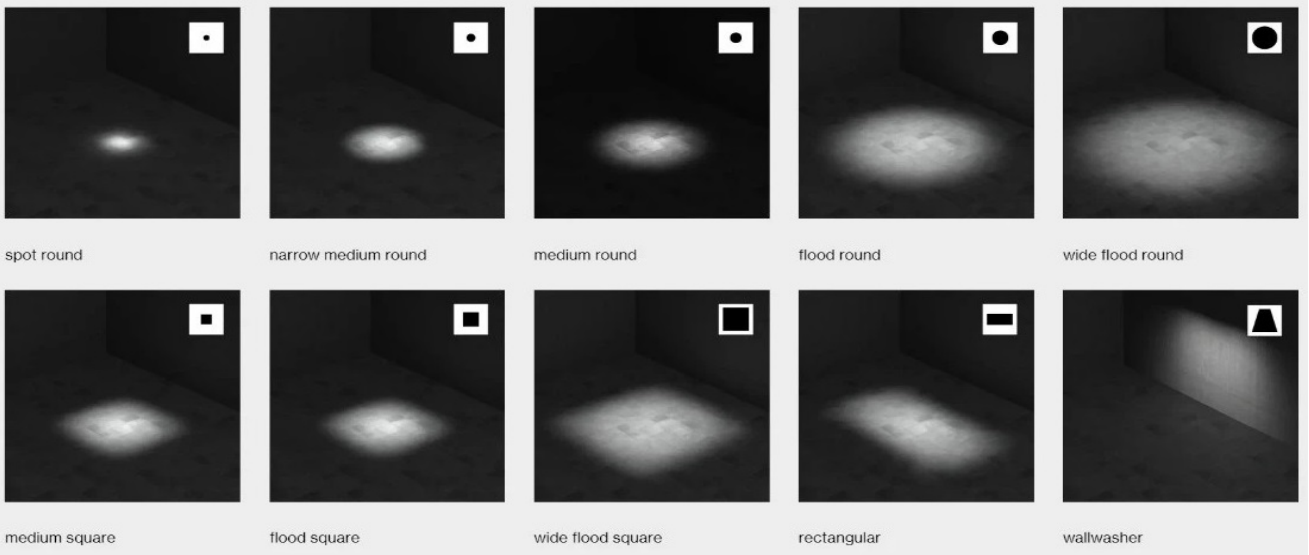
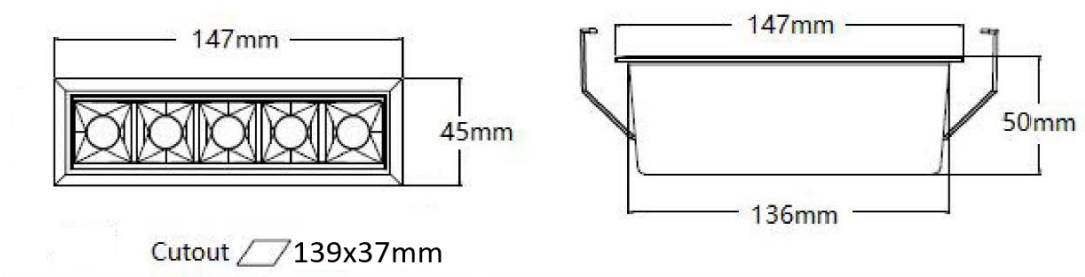
Total Power : 9.5W 550lm

Dimensions: L147xW45xH50mm

Cut out: 139x37mm

Power Supply: 500mA 15Vdc Tridonic 87500803 LC 10/500/20 fixC SR SNC2

Measurement





	code	w	lm	led	size (mm)	cut-out(mm)
Architectural Lighting	L06058-20	19	1150	10	L280xW45xH50mm	272x37mm

High-Contrast

Frame Versions



Color temperature	Finishes	Protection	Optic
2700K CRI >90	Black	IP20	Spot (15°)
3000K CRI >90	White		Flood (30°)
4000K CRI >90			Wide Flood (45°)
5000K CRI >90			Wall Washer



Technical description

Linear miniaturised recessed luminaire for 10 optical elements with LED lamps - fixed optic - three beam angle for option. Despite the ultracompact size of the product. The technology of the optic system guarantees an efficient flow and a high level of controlled glare visual comfort. Version with perimeter surface frame. Metallised, thermoplastic, high definition Opti Beam reflectors, integrated in a set-back position in the anti-glare screen. Osram or CREE branded LED - High CRI.

Certification : Europe Standard CE certificate

Material : Die-cast aluminum and thermoplastic

Installation : Wall recessed or ceiling recessed with steel wire springs for false ceilings from 1 to 20 mm thick

Application : Hotel, Airport, Art Centre, Museum, Art Gallery, Restaurant, Home, Office, Shopping mall or other Commercial and Retail Spaces.

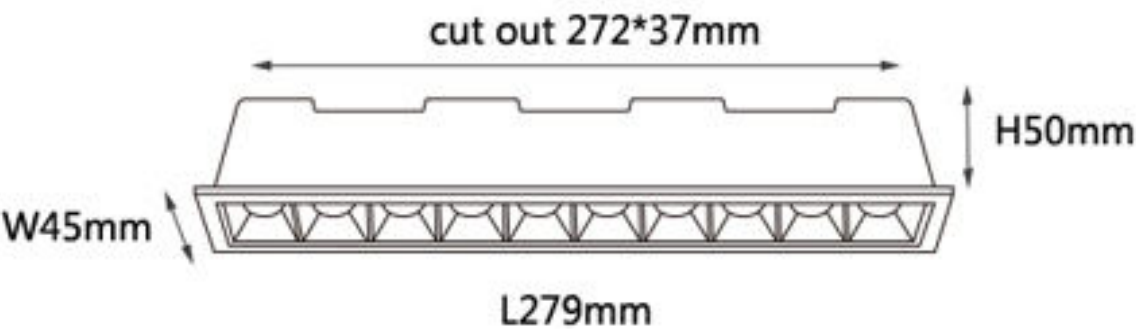
Power input : 19W 1150lm 3000K

Dimensions: L279xW45xH50mm

Cut out: 272x37mm

Power Supply: 500mA 30Vdc

Measurement

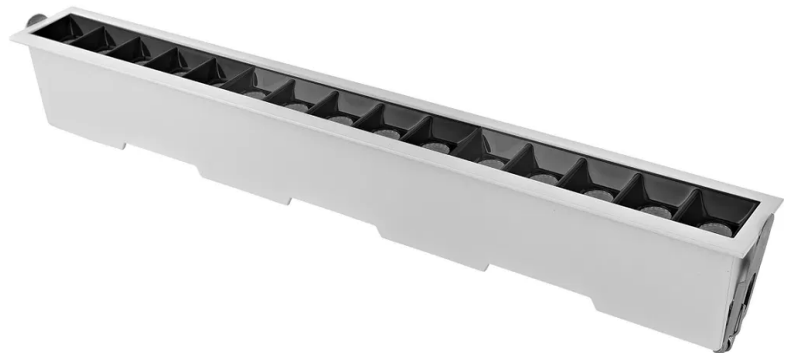




	code	w	lm	led	size (mm)	cut-out(mm)
Architectural Lighting	L06058-30	30	1500	15	L411xW45xH50mm	403x37mm

High-Contrast

Frame Versions



Color temperature	Finishes	Protection	Optic
2700K CRI >90	Black	IP20	Spot (15°)
3000K CRI >90	White		Flood (30°)
4000K CRI >90			Wide Flood (45°)
5000K CRI >90			Wall Washer



Technical description

Linear miniaturised recessed luminaire for 15 optical elements with LED lamps - fixed optic - three beam angle for option. Despite the ultracompact size of the product. The technology of the optic system guarantees an efficient flow and a high level of controlled glare visual comfort. Version with perimeter surface frame. Metallised, thermoplastic, high definition Opti Beam reflectors, integrated in a set-back position in the anti-glare screen. Osram or CREE branded LED - High CRI.

Certification : Europe Standard CE certificate

Material : Die-cast aluminum and thermoplastic

Installation : Wall recessed or ceiling recessed with steel wire springs for false ceilings from 1 to 20 mm thick

Application : Hotel, Airport, Art Centre, Museum, Art Gallery, Restaurant, Home, Office, Shopping mall or other Commercial and Retail Spaces.

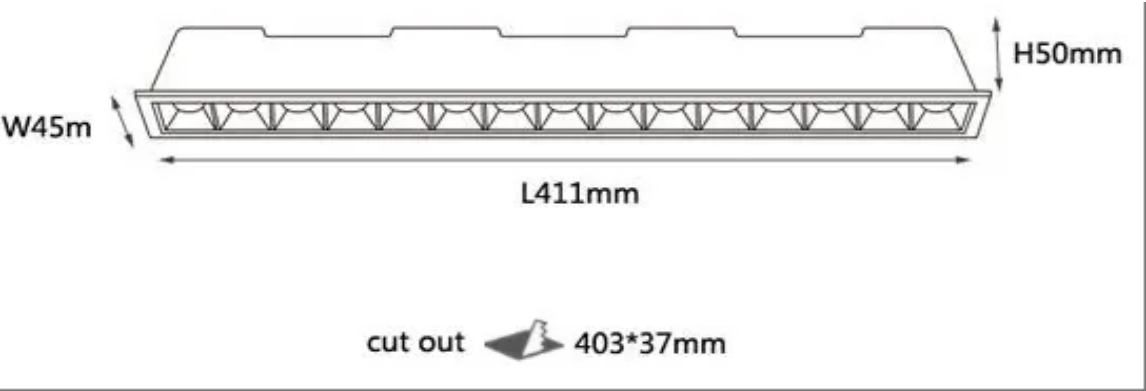
Power input : 30W 1500lm 3000K

Dimensions: L411xW45xH50mm

Cut out: 403x37mm

Power Supply: 700mA 42Vdc

Measurement



Pic	Model	Wattage LED QTY'S	Dimension	Cutout	Power Supply	Input Voltage	Light Efficiency	LED CRI	Color Temperature	IP Rating	Beam Angle	Quotation
	L06058-2	1 x 2W	45x45xH50 mm	37x37 mm	200mA 3V DC OSRAM Driver ON/OFF	AC220-240 50-60/Hz	60lm/W	OSRAM CRI90+	3000K 4000K 5000K 6000K	IP20	15° 30° 45°	\$10.0/pc
	L06058-4	2 x 2W	75x45xH50 mm	67x37 mm	400mA 6V DC OSRAM Driver ON/OFF	AC220-240 50-60/Hz	60lm/W	OSRAM CRI90+	3000K 4000K 5000K 6000K	IP20	15° 30° 45°	\$10.9/pc
	L06058-10	5 x 2W	147x45xH50 mm	139x37 mm	500mA 15V DC Tridonic Driver ON/OFF	AC220-240 50-60/Hz	60lm/W	OSRAM CRI90+	3000K 4000K 5000K 6000K	IP20	15° 30° 45°	\$12.3/pc
	L06058-20	10 x 2W	279x45xH50 mm	272x37 mm	500mA 30V DC Tridonic Driver ON/OFF	AC220-240 50-60/Hz	60lm/W	OSRAM CRI90+	3000K 4000K 5000K 6000K	IP20	15° 30° 45°	\$16.1/pc
	L06058-30	15 x 2W	411x45xH50 mm	403x37 mm	700mA 42V DC Tridonic Driver ON/OFF	AC220-240 50-60/Hz	60lm/W	OSRAM CRI90+	3000K 4000K 5000K 6000K	IP20	15° 30° 45°	\$19.3/pc